



MACCR&R 2023 Child Care Data Report

For over 30 years, the Massachusetts Child Care Resource and Referral Network has worked to provide access and support to quality child care in MA. CCR&Rs provide a needed bridge between parents, providers, community leaders, and policymakers. By offering a unique blend of services and planning expertise, CCR&Rs help families and communities ensure children have safe, healthy, quality care when they need it.

Family Support Services

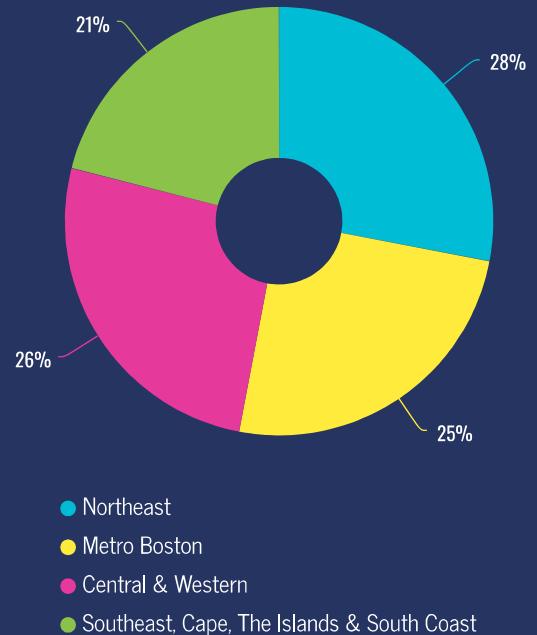
Provided families with over 227,000 referrals to child care businesses in all 351 cities and towns.



Each referral is customized to meet the needs of the families and their children.

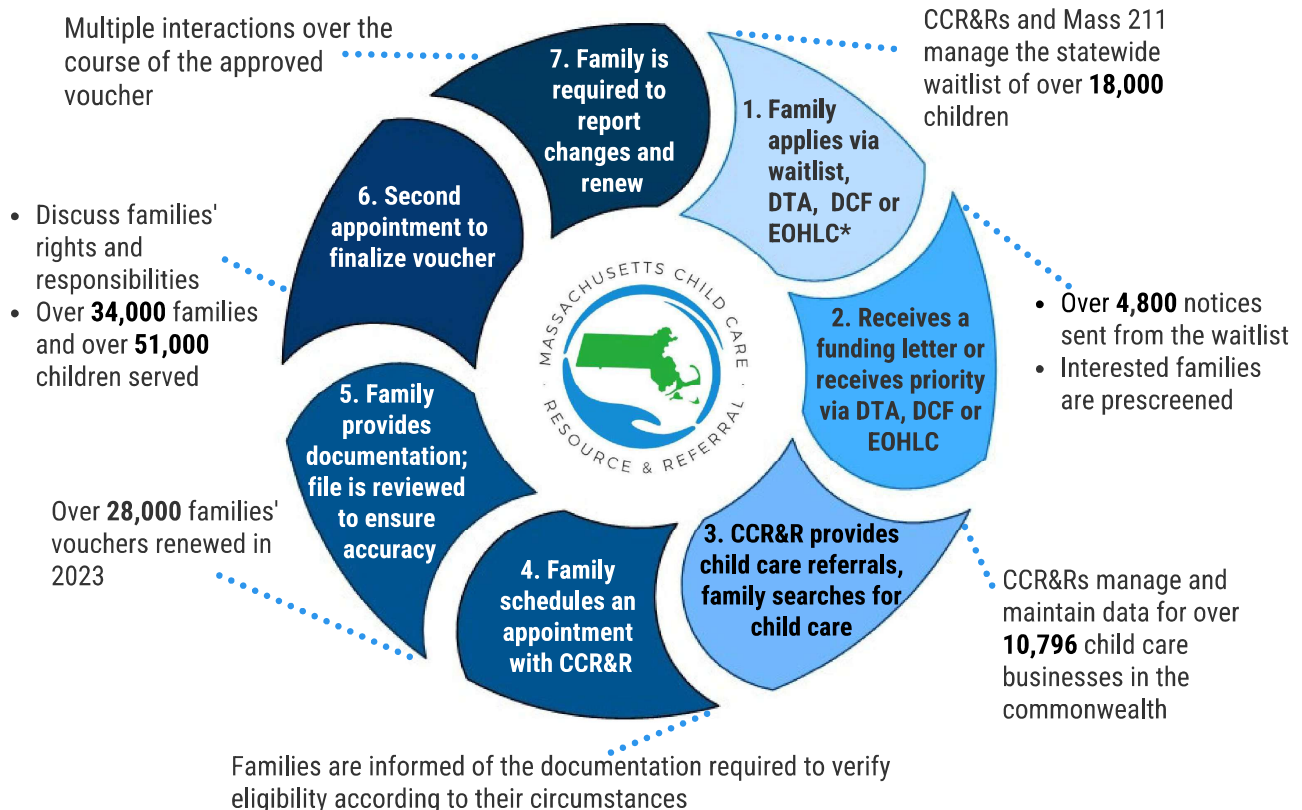
Financials Performance

Over \$450 Million distributed across the commonwealth



100% of the CCR&R access management services are reimbursed by the Federal Government in line item 3000-2000.

A family's journey to receiving a child care voucher



*DTA=Dept. Transitional Assistance, DCF=Dept. Children & Families EOHLIC=Executive Office of Housing and Livable Communities



MACCR&R 2023 Child Care Data Report

Waitlist Priorities

Early Educators

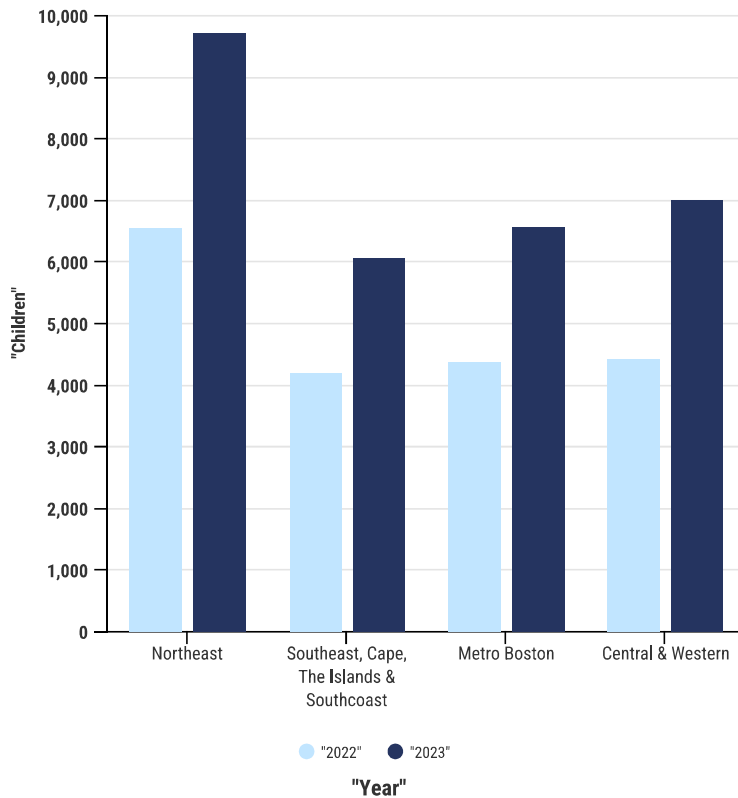
CCR&R's were vital in maintaining workforce stability within the commonwealth as they supported the access to child care for early education and care staff. We issued child care financial assistance to nearly **1,700** children of early education staff.

Migrant Crisis



CCR&R's worked extensively to ensure inclusive and proactive services were provided to families. CCR&R's visited shelters/motels and migrant/refugee arrival points to meet with families. Child care financial assistance information sessions were held with the use of translation services. The use of technology including "Zoom" meetings was one way CCR&R's collaborated with community partners to best serve these new families.

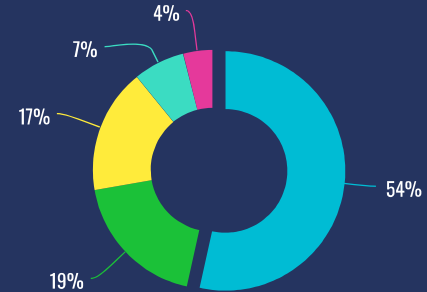
Income Eligible Utilization by Region



The CCR&R's have been instrumental in reducing the number of families on the statewide waitlist. Over 4,800 funding availability notices were sent throughout 2023, resulting in a 50% increase in children placed during 2023.

Where Are Our Children finding Care?

Center-based care options have traditionally been the largest provider of full time care in MA with these programs making up 54% of the states' available full time capacity. Furthermore, family child care licensed capacity increased by 2% since 2022, indicating a recent popular growth in this type of care.



- Center-based Programs
- Before & After-School Program
- Family Child Care Homes
- Preschool Programs
- Summer Camps

CCR&R Network Members

Child Care Choices of Boston

105 Chauncy Street, 2nd Floor
Boston, MA 02111
(617) 542-5437

Child Care Circuit

190 Hampshire Street
Lawrence, MA 01840
(978) 686-4288

Child Care Network

372 North Street
Hyannis, MA 02601
(508) 778-9470

Child Care Resources

799 West Boylston Street
Worcester, MA 01605
(508) 856-7930

Child Care Works

105 William Street, 4th Floor
New Bedford, MA 02740
(508) 999-9930

Community Care for Kids

1509 Hancock Street
Quincy, MA 02169
(617) 657-5305

For questions regarding this report contact
Corrine Corso at ccorso@childcarecircuit.org
Phone: +1 978-722-2544

Website: <https://machildcareresourcesonline.org>